

**PRO**<sup>ELECTRONICS®</sup>**USER**

*Ready to go!*

**ENERGY SOLUTIONS & ACCESSORIES**  
FOR CAR AND LEISURE



# INDEX

## PSI Serie

Pure sine wave inverters

P. 4 - 7

## Solar Panels

For fixed mounting

P. 8 - 11

## Foldable Solar Panels

Solar panel 100 and 180 Ampère

P. 12 - 13

## Power Inverters

Both MPPT and PWM technology

P. 14 - 15

## Lithium Battery

100 en 125 Ampère

P. 17

## DC/DC Charger

Battery chargers

P. 19

## IBC Series

Intelligent battery chargers (with Bluetooth), battery tester and accessories

P. 20 - 23

## DRC Series

Digital wireless reversing cameras

P. 24 - 25

## Rechargeable Tire Compressor

AC2400 & BP120

P. 26



## ENERGY SOLUTIONS & ACCESSORIES FOR CAR AND LEISURE

In this catalogue you will find an overview of the assortment from Pro-User Electronics. These products are manufactured for Pro-User Electronics by reliable manufacturers from all over the world. All products contain the right quality approvals such as: CE, E, R&TTE, GS and TÜV. With high-quality products and its unique design Pro-User Electronics has proven to be a strong brand in multiple countries.

**Pro-User Electronics is part of Tradekar House of Leisure Brands**

**For more information: [www.pro-user.com](http://www.pro-user.com)**

**PROUSER** ELECTRONICS®

### **Customer service**

For any questions, please contact our customer service.

You can reach us by phone on: +31 (0)345 470998  
from Monday to Friday from 8:30 am to 12:30 pm.

If you prefer sending an email, you can send it to [service@tradekar.com](mailto:service@tradekar.com). Unfortunately it is not possible for the consumer to visit our office. For (non-) technical questions, more information and sales, please contact the nearest dealer.

## PSI1500TX Hybrid & PSI3000TX Hybrid

The inverters are ideal if you want to use sensitive 230V equipment during your trip by car, camper, boat, etc. Thinking of charging your phone or laptop, while also using an electrical cool box, these inverters are the solution. The PSI1500TX Hybrid and the PSI3000TX Hybrid feature a built-in MPPT and battery charger. With this, you always charge the on-board battery and no longer need an external MPPT or battery charger. You also get the highest possible efficiency from your solar panels with this feature.

In addition, these voltage inverters are equipped with an autoswitch, so that in the event of a power failure, the inverter automatically switches to the inverter and also switches it off as soon as mains voltage is available again.

### The PSI1500TX Hybrid and the PSI3000TX Hybrid with built-in MPPT solar panel charge controller and battery charger

- Pure sine wave voltage, suitable for very sensitive devices
- Built-in battery charger suitable for STD / AGM / LiFePO4
- With built-in MPPT charge current controller
- Ideal for mobile use to use 230V devices
- Protects against over and under voltage, sparking, short circuit and overheating
- The inverter generates an AC 230 voltage from a 12V DC voltage
- Easy mounting. Included remote control for easy use
- With built-in fan
- Auto switch to mains as soon as it is turned on or connected to utility power

	PSI1500TX Hybrid	PSI3000TX Hybrid
Art.no.	19141	19134
Battery Voltage	10.5V – 16V	10.5V – 16V
Standby Current	≤0.65A	≤1.2A
Recommended Battery Capacity	Lead acid/Gel/AGM: ≥250 Ah	Lead acid/Gel/AGM: ≥480 Ah
AC Output Voltage	230V	230V
Frequency	50 Hz	50 Hz
Automatic Transfer Switch	✓	✓
Rated Output Power	1500W	3000W
Surge Power	2250W (10s)	4500W (10s)
Peak Power	3000W (2s)	6000W (2s)
Efficiency	≥90%	≥90%
USB Output	5V / 2.1A	5V / 2.1A
Dimensions	L310 x W220 x H150 mm (housing) L360 x W220 x H150 mm (incl. terminals)	L415 x W220 x H150 mm (housing) L515 x W220 x H150 mm (incl. terminals)
Weight	7.6 kg	8.6 kg
Operating Temperature	-15°C – 40°C	-15°C – 40°C
Storage Temperature	-40°C – 85°C	-40°C – 85°C
Cooling	Air-cooled	Air-cooled
Remote Control with Wiring	Included	Included
Battery Whiring	16 mm <sup>2</sup> (80 cm)	35 mm <sup>2</sup> (80 cm)
Solar Connection MC4	✓	✓
MPPT Charger	✓	✓
Battery charger	✓	✓
EAN	8717809191410	8717809191342



**PSI1500TX Hybrid**



**PSI3000TX Hybrid**



## PSI series - Pure Sine Wave Inverters

The PSI inverters ensure that the 12V voltage from your battery is converted into a 230V as you are used to at home. As these inverters have a pure sine wave voltage, you can use them even for the most sensitive equipment. In addition, our PSI1000TX, PSI1500TX, PSI2000TX & PSI3000TX are equipped with an auto-switch, so that in the event of a power failure, the inverter automatically switches to the inverter and also switches it off again as soon as mains voltage is available again.



**PSI3000TX**



**PSI2000TX**

	PSI3000TX	PSI2000TX
Art.no.	19133	19132
Battery Voltage	10.5V – 16V	10.5V – 16V
Standby Current	≤1.2A	≤0.7A
Recommended Battery Capacity	Lead acid/Gel/AGM: >480 Ah	Lead acid/Gel/AGM: >320 Ah
AC Output Voltage	230V	230V
Frequency	50 Hz	50 Hz
Automatic Transfer Switch	✓	✓
Rated Output Power	3000W	2000W
Surge Power	4500W (10s)	3000W (10s)
Peak Power	6000W (2s)	4000W (2s)
Efficiency	≥90%	≥90%
USB Output	5V / 2.1A	5V / 2.1A
Dimensions	L415 x W220 x H150 mm (housing) L515 x W220 x H150 mm (incl. terminals)	L385 x W220 x H85 mm (housing) L440 x W220 x H85 mm (incl. terminals)
Weight	7.6 kg	5.0 kg
Operating Temperature	-15°C – 40°C	-15°C – 40°C
Storage Temperature	-40°C – 85°C	-40°C – 85°C
Cooling	Air-cooled	Air-cooled
Remote Control with Wiring	Inclusive	Inclusive
Battery Whiring	35 mm² (80 cm)	25 mm² (80 cm)
EAN	8717809191335	8717809191328



The display that comes with the PSI3000TX Hybrid, PSI3000TX, PSI2000TX, PSI1500TX, PSI1000TX and the PSI600 is suitable for surface mounting and built-in.





**PSI1500TX**



**PSI1000TX**



**PSI600**

Art.no.

Battery Voltage

Standby Current

Recommended Battery Capacity

AC Output Voltage

Frequency

Automatic Transfer Switch

Rated Output Power

Surge Power

Peak Power

Efficiency

USB Output

Dimensions

Weight

Operating Temperature

Storage Temperature

Cooling

Remote Control with Wiring

Battery Whiring

EAN





**PSI400**



**PSI300**

	PSI1500TX	PSI1000TX	PSI600	PSI400	PSI300
	19135	19138	19137	19136	19139
	10.5V – 16V	10.5V – 16V	10.5V – 16V	10.5V – 16V	10.5V – 16V
	≤0.65A	≤0.56A	≤0.46A	≤0.35A	≤0.25A
	Lead acid/Gel/AGM: ≥250 Ah	Lead acid/Gel/AGM: ≥160 Ah	Lead acid/Gel/AGM: ≥100 Ah	Lead acid/Gel/AGM: ≥50 Ah	Lead acid/Gel/AGM: ≥40 Ah
	230V	230V	230V	230V	230V
	50 Hz	50 Hz	50 Hz	50 Hz	50 Hz
	✓	✓	-	-	-
	1500W	1000W	600W	400W	300W
	2250W (10s)	1500W (10s)	900W (10s)	600W (10s)	450W (10s)
	3000W (2s)	2000W (2s)	1200W (2s)	800W (2s)	600W (2s)
	≥90%	≥90%	≥90%	≥90%	≥90%
	5V / 2.1A	5V / 2.1A	5V / 2.1A	5V / 2.1A	5V / 2.1A
	L320 x W220 x H90 mm (housing) L380 x W220 x H85 mm (incl. terminals)	L355 x W150 x H75 mm (housing) L405 x W150 x H75 mm (incl. terminals)	L215 x W150 x H75 mm (housing) L265 x W150 x H75 mm (incl. terminals)	L185 x W150 x H75 mm (housing) L235 x W150 x H75 mm (incl. terminals)	L165 x W150 x H75 mm (housing) L215 x W150 x H75 mm (incl. terminals)
	4.1 kg	2.8 kg	1.9 kg	1.6 kg	1.4 kg
	-15°C – 40°C	-15°C – 40°C	-15°C – 40°C	-15°C – 40°C	-15°C – 40°C
	-40°C – 85°C	-40°C – 85°C	-40°C – 85°C	-40°C – 85°C	-40°C – 85°C
	Air-cooled	Air-cooled	Air-cooled	Air-cooled	Air-cooled
	Inclusive	Inclusive	Inclusive	Optional	Optional
	16 mm <sup>2</sup> (80 cm)	10 mm <sup>2</sup> (80 cm)	6 mm <sup>2</sup> (80 cm)	4 mm <sup>2</sup> (80 cm)	4 mm <sup>2</sup> (80 cm)
	8717809191267	8717809191304	8717809191373	8717809191267	8717809191397

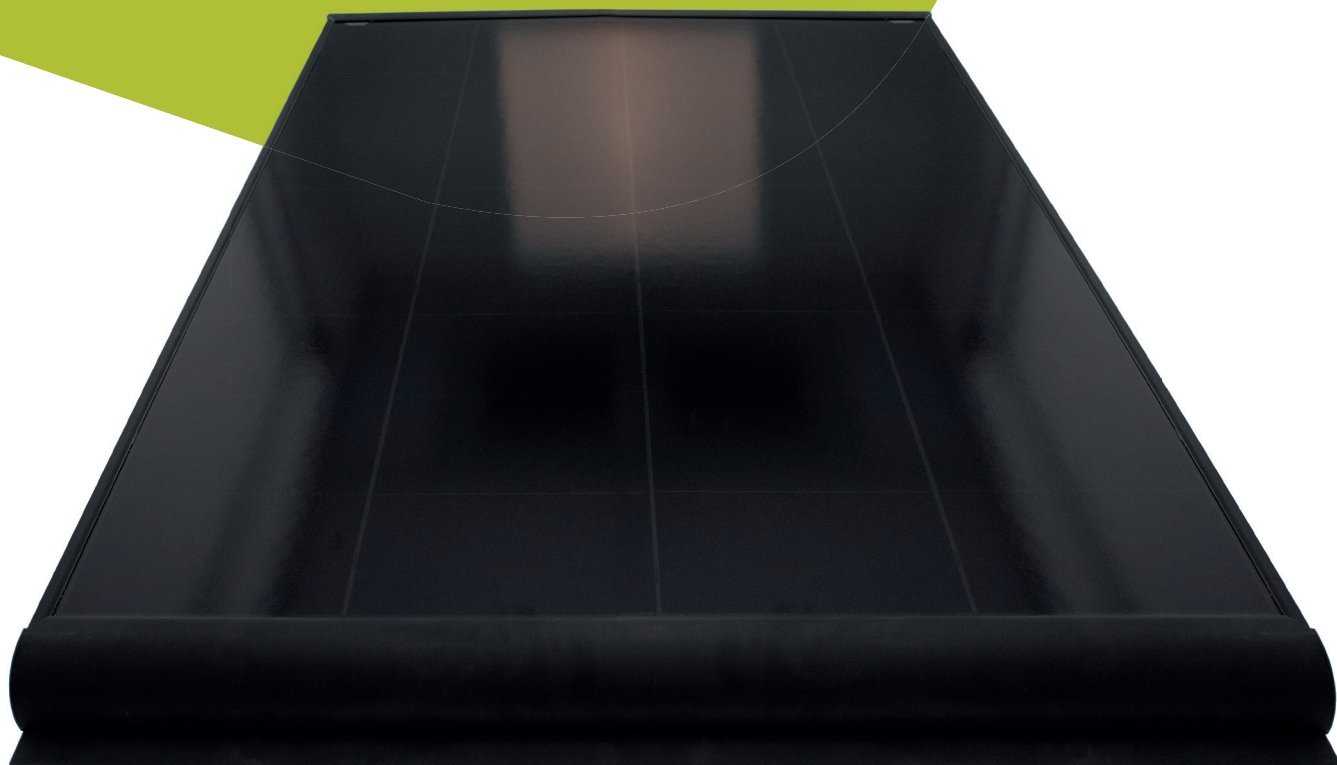


## Solar Panel

For camper and caravan enthusiasts, solar panels offer an excellent solution to go off-grid and enjoy the freedom of travelling without depending on external power sources.

Pro-user's solar panels are suitable for permanent mounting on the roof of the camper and caravan. The panels are available in 3 different sizes so there is always a suitable solution. All panels are pre-assembled and can be installed immediately.

The solar panels are equipped with HPBC cells. HPBC cells are known for their high energy efficiency. This means they can convert more solar energy into electricity, even at low light intensity. For campers and caravans, which are often exposed to shade or changing weather conditions, this higher efficiency can be a crucial advantage. The solar panels can be connected either in series or in parallel.



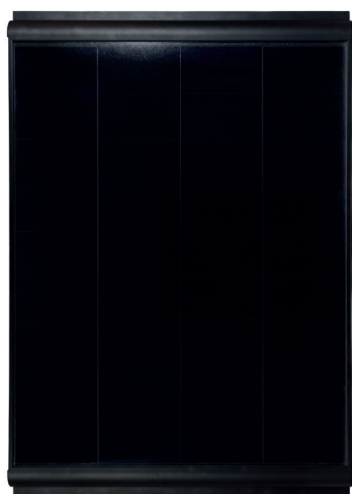
Wondering how many watt-hour your appliances consume and how many solar panels and the battery capacity you need to use them without the grid?

Scan the QR code and use our calculator to easily calculate your consumption and how many solar panels are needed to generate enough energy to operate the devices.

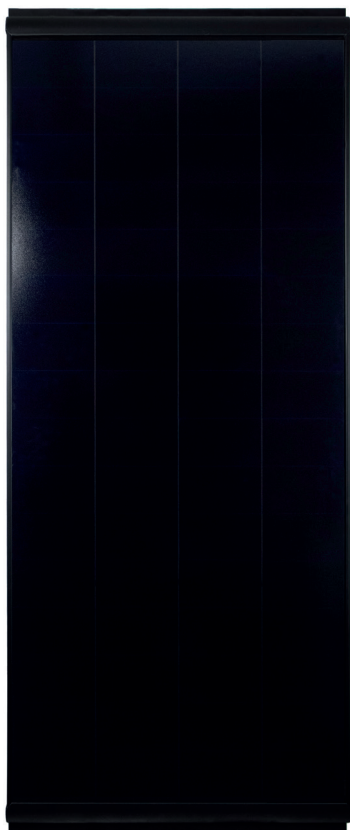


Solar-Calculator





**SP120**



**SP180**



**SP220**

	SP120	SP180	SP220
Art.no.	28108	28109	28110
Maximum power	120 Watt	180 Watt	220 Watt
Voltage at PMax (Vmp)	20.50V	18.24V	18.96V
Current at PMax (Imp)	5.85A	9.87A	11.60A
Open circuit voltage (Voc)	24.77V	23.05V	23.15V
Short circuit current (Isc)	6.17A	10.69A	12.28A
Module efficiency	20.9%	21%	20.8%
Solar panel	HPBC High efficiency cells	HPBC High efficiency cells	HPBC High efficiency cells
IP class (junction box)	IP67	IP67	IP67
Dimensions	L975 x W670 x H40 mm	L1615 x W670 x H40 mm	L1695 x W670 x H40 mm
Weight	6.8 kg	11.3 kg	11.8 kg
Battery connection	MC4	MC4	MC4
Battery wiring MC4	1x 5m cable (4 mm <sup>2</sup> )	1x 5m cable (4 mm <sup>2</sup> )	1x 5m cable (4 mm <sup>2</sup> )
EAN	8717809281081	8717809281098	8717809281104

## Solar Panel Slimline

Pro-User Electronics' range has been extended by 2 models of Slimline solar panels: SPS120 & SPS180. These solar panels have a width of only 53 cm, making them even more convenient to place on the roof of the camper or caravan.

The SPS120 and SPS180 have an output of 120 and 180 watts respectively and are equipped with HPBC cells. These HPBC cells ensure that more solar energy can be converted into electricity, even at low light intensity.

In addition, solar panels with HBPC cells are lighter than other types of solar panels. The weight is of important when placing the solar panels on the roof of your motorhome or caravan.

Both models are pre-assembled and come with a junction box, 5 metres of cable and roof cable entry. The solar panels can be connected in series or parallel.



**SPS120**



**SPS180**





**28305** 3m ex cable  
**28306** 5m ex cable  
**28307** 10m ex cable

## ACCESSORIES

The accessories below make it even easier to expand your solar panel system or make connecting/installing your solar panels more convenient.

Available accessories:

- 28305 3m ex cable
- 28306 5m ex cable
- 28307 10m ex cable
- 28310 PV Y-cable
- 28311 MC4 connector set
- 28309 Roof entry white
- 28308 Roof entry black



**28310** PV Y-cable



**28311** MC4 connector set



**28309** Roof entry white



**28308** Roof entry black

	SPS120 Slimline	SPS180 Slimline
Art.no.	28111	28112
Maximum power	120 Watt	180 Watt
Voltage at PMax (Vmp)	20.67V	21.84V
Current at PMax (Imp)	5.81A	8.24A
Open circuit voltage (Voc)	24.91V	26.02V
Short circuit current (Isc)	6.08A	8.95A
Module efficiency	20%	20,5%
Solar panel	HPBC High efficiency cells	HPBC High efficiency cells
IP class (junction box)	IP68	IP68
Dimensions	L1250 x W530 x H40 mm	L1780 x W530 x H40 mm
Weight	6.44 kg	9.59 kg
Battery connection	MC4	MC4
Battery wiring MC4	1x 5m cable (4 mm²)	1x 5m cable (4 mm²)
EAN	8717809281111	8717809281128



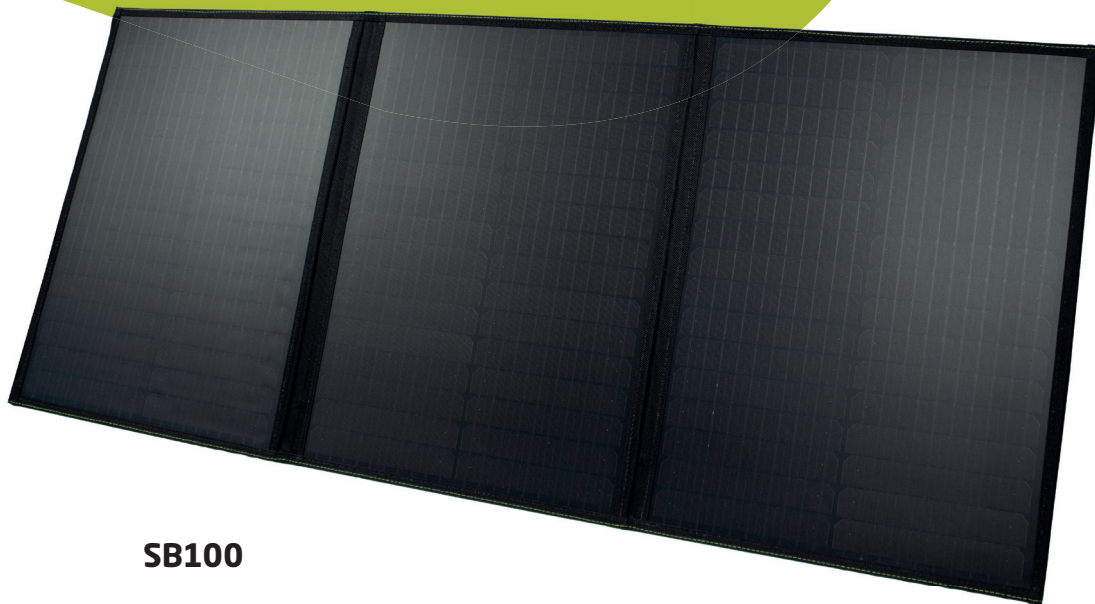
## Foldable Solar Panel

Pro-User has 2 types of foldable solar panels in its range; 100 watts and 180 watts.

The solar panels feature HPBC solar cells. These cells use advanced technology that combines different semiconductor materials to increase the efficiency of the solar panels. This technology ensures better performance even in less favourable conditions. Resulting in a high solar efficiency.

Both solar panels are equipped with supports so you can easily move them for maximum sunlight. It is possible to connect several panels to each other. This way, more sunlight is captured and you are not dependent on the power grid.

The foldable solar panels are equipped with a charge current regulator of 10 Amp (SB100) and 20 Amp (SB100) PWM technology. This allows you to safely connect your solar panel to a battery and charge it. Both solar panels come with standard connectors and cables.



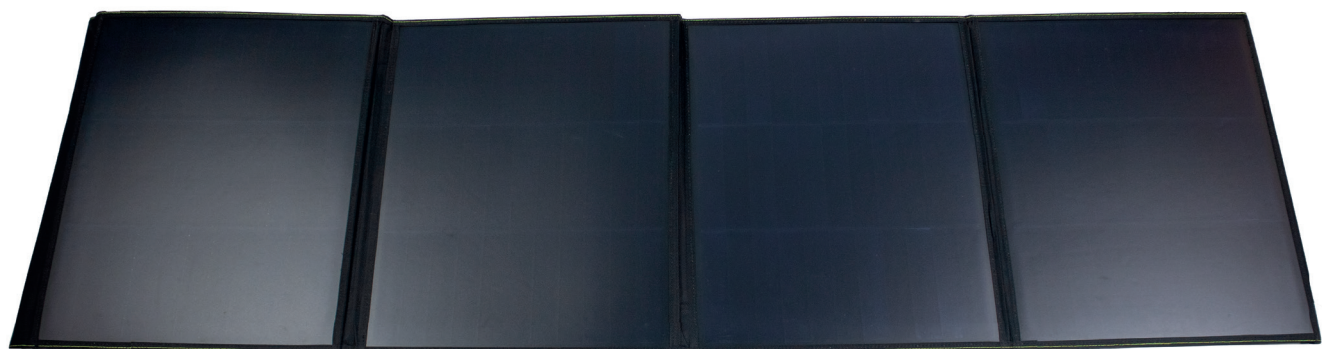
**SB100**



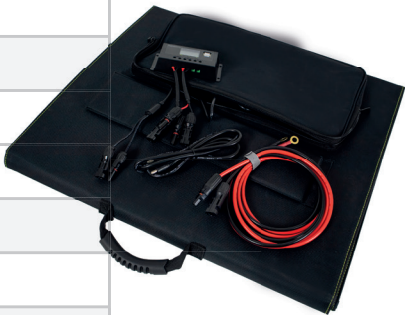




**SB180**



	SB100	SB180
Art.no.	28106	28107
Max. current	100 Watt	180 Watt
Voltage at PMax (Vmp)	20.26V	20.39V
Current at PMax (Imp)	4.94A	8.83A
Open circuit voltage (Voc)	24.13V	24.70V
Short circuit current (Isc)	5.24A	9.33A
Cell efficiency	23.7%	22.6%
Maximum power USB-A	5V / 3.4A	5V / 3.4A
Maximum power USB-C	5V / 3A	5V / 3A
Maximum power DC	23.6 V / 4.5A	23.6V / 4.5A
Output type	MC4 (2M cable)	MC4 (2M cable)
Solar panel	Mono HPBC Cells, Epoxy	Mono HPBC Cells, Epoxy
PWM charge current regulator	10A	20A
Dimensions folded	L470 x W435 x D4 mm	L610 x W460 x H6 mm
Dimensions open	L1325x W470 x D5 mm	L1905 x W610 x H5 mm
DC-Cabel (1.5M)	1x	1
Mounting hooks	4	4
Weight	3.5 kg	5.7 kg
EAN	8717809281067	8717809281074



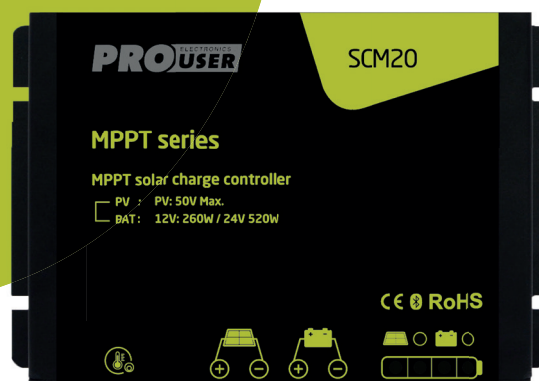
## Charge Current Regulator with MPPT

You simply connect these charge current regulators to the solar panel and the battery. The SCM20 and SCM30 are equipped with MPPT technology. This technology ensures that more power is generated from a solar panel compared to charge current regulators without MPPT. This can be as much as 30% more energy!

Both 12V and 24V batteries Can be connected to all solar current regulators. The regulator automatically detects the battery voltage. All charge current regulators are protected against short circuits, reverse polarity and too high battery voltage.



**SCM30**



**SCM20**

	SCM30	SCM20
Art.no.	18282	18284
Accu Types	STD, AGM, LifePo4 (12V)	STD, AGM, LifePo4 (12V)
Suitable Battery Voltage	12V / 24V	12V / 24V
Max. Charging Coltage	30A	20A
Max Solar Voltage	100V	50V
Max. PV Output 12V	450 Watt	260 Watt
Max. PV Output 24V	900 Watt	520 Watt
USB Output	2x 5V / 2.4A	-
Wi-Fi Function (app)	✓	✓
Temperature Sensor	✓	✓
Dimensions	L177 x W237 x H63 mm	L164 x B107 x H32 mm
Weight	1450 gr.	700 gr.
EAN	8717809182821	8717809182845



## Charge Current Regulator

A charge current regulator is necessary to convert the generated energy from the solar panel to the battery without overcharging. This regulator charges a battery as efficiently as possible and protects it from fluctuating charge currents and deep discharge.



**SCP50**



**SCP30**



**SCP10**

	SCP50 (PWM)	SCP30 (PWM)	SCP10 (PWM)
Art.no.	18283	18281	18280
Model	SCP50	SCP30	SCP10
Accu Types	STD, AGM, LifePo4 (12V)	STD, AGM, LifePo4 (12V)	STD, AGM, LifePo4 (12V)
Suitable Battery Voltage	12V / 24V / 36V / 48V	12V / 24V	12V / 24V
Max. Charging Coltage	50A	30A	10A
Max Solar Voltage	100V	50V	50V
Max. PV Output 12V	750 Watt	450 Watt	150 Watt
Max. PV Output 24V	1500 Watt	900 Watt	300 Watt
Max. PV Output 36 V	2250 Watt	-	-
Max. PV Output 48 V	3000 Watt	-	-
USB Output	2x 5V / 2.4A	2x 5V / 2.4A	1x 5V / 2.4A
Wi-Fi Function (app)	✓	✓	-
Temperature Sensor	✓	✓	-
Dimensions	L177 x W237 x H63 mm	L108 x W190 x H51 mm	L81 x W125 x H30 mm
Weight	1120 gr.	560 gr.	130 gr.
EAN	8717809182838	8717809182814	8717809182807



# **PRO** ELECTRONICS® **USER**

*Ready to go!*





# Lithium Batteries

The LI12100 and LI12125 are perfect batteries for the camper who spends a lot of time on the road!

These Lithium batteries are powerful, reliable and have a large capacity (100 and 125 amps respectively). This makes them excellent on-board batteries. In addition, they are compact. Designed to fit under the frontseat in the camper, they are never in the way. Ideal for your trip!

Both batteries are maintenance-free and can therefore be permanently mounted in the camper or caravan. Rather not mount them permanently? No problem! They are lightweight batteries fitted with handles so they can easily be removed from the camper or caravan.

Both the LI12100 and the LI12125 are equipped with Bluetooth connection. This allows you to read the status and condition of your battery via the free downloadable Enduro Battery app. This includes temperature, how full the battery is charged and the current drawn. You can also set an alarm if certain values fall below the minimum.



	LI12100	LI12125
Art.no.	18130	18131
Output voltage	12.8V	12.8V
Battery capacity	100 Ah / 1280 Wh	125 Ah / 1600 Wh
Current consumption	200A	200A
Peak current	350A (<10 sec)	350A (<10 sec)
Max. charging current	100A	125A
Battery charger	Not included	Not included
Charging voltage	14.6V	14.6V
Lifespan	>2000 cycli	>2000 cycli
Weight	Ca. 11.5 kg	Ca. 14.1 kg
EAN	8717809181305	8717809181312



# **PRO** ELECTRONICS® **USER**

*Ready to go!*





# DC/DC Charger

For even more convenience on the road, Pro-User Electronics has added 2 DC/DC battery chargers to its range added.

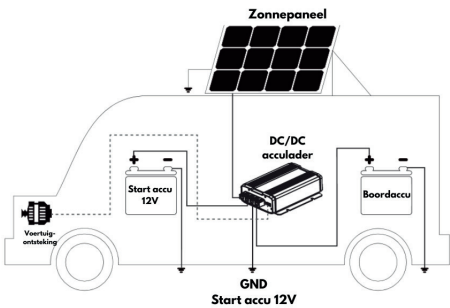
These 20A and 40A chargers ensure that the on-board battery is charged while driving. This can be done via direct connection from battery to charger or via the IGN+ connection (Euro 5/6 models). This connection goes directly to the alternator.

In addition, the Pro-User DC/DC chargers have a built-in MPPT charger, which means they can handle both dynamo input voltage of 11.6 to 18V and solar panel input voltage of 12 to 28V. The DCDC20 has a max Solar input of 250W and the DCDC40 a max Solar input of 500W.

Both chargers are compatible with different battery types, such as 12V STD, GEL, AGM, CAL, and LiFePO4 batteries. They offer a high efficiency of more than 94%, ensuring that energy losses is minimal and charging time is fast and optimal runs.



	DCDC20	DCDC40
Art.no.	18182	18183
Output voltage	12V	12V
Dynamo input voltage	12V dynamo 11.6-18V	12V dynamo 11.6-18V
Solar panel input voltage	12-28V	12-28V
Max. input current	20A	40A
Max. cont. output current	20A	40A
Max. input solar panel	250W	500W
Non-load current	<10 mA	<10 mA
Efficiency	>94%	>94%
Battery types	12V STD, GEL, AGM, CAL & LiFePO4	12V STD, GEL, AGM, CAL & LiFePO4
Battery capacity	40-250 Ah	80-500 Ah
EAN	8717809181824	8717809181831





## ACCESSORIES

Do you want to charge multiple batteries with an IBC charger? Then it is wise to leave an extra cable permanently attached to the battery.



**IBC 2.0m extension cable**  
Art. no. 18178



**IBC 1.0m cable with rings**  
Art. no. 18175



**IBC 0.4m cable with clamps**  
Art. no. 18176

## CHECK & CHARGE

The app displays the parameters of your battery charger and the status and condition of the battery in a very easy way.

The app is easy to use and available in the App Store and Google Play. Compatible with IBC Bluetooth chargers.



Android



iOS



# IBC Series

The absolute best when it comes to charging battery's. With our wide range of battery chargers there is always a battery charger that will suit your needs. Our multi-voltage IBC chargers ensure that you will never come across any unpleasant surprises ever again.

These chargers are compatible with a wide selection of batteries and have a minimum of 7 up to a maximum of 10 step charging program. This program ensures that your battery remains in optimal condition and thanks to the display you are always able to check the current status of the charging program.

These chargers are installed with a Bluetooth system that let's you connect them to your mobile phone and check the battery status through use of our Check & Charge app. While using this app you will not only be able to read the status however, you can switch the program on or off.

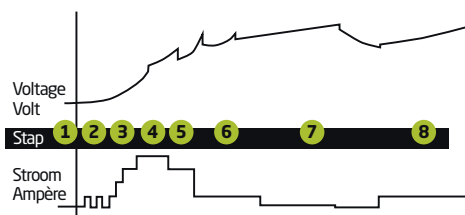
## Battery charger with display

- Suitable for 6V / 12V and 12V / 24V STD, GEL and Lithium batteries
- Bluetooth for Check & Charge app\* except IBC4000 & IBC800
- Fully protected against sparks, shortcut and overheating
- Supplied with recovery function
- Waterproof casing. Up to 65 IP
- Digital control with a built-in microprocessor
- Including battery pole clamps and eyelet terminals



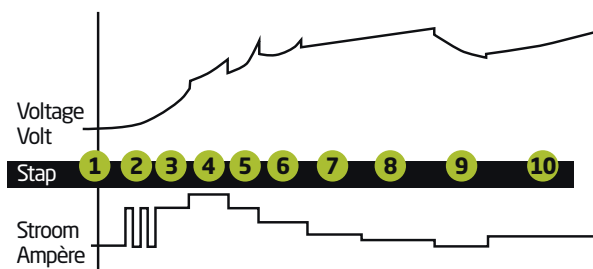
IBC7500B

## 8 STAGE CHARGER



- Step 1: Check
- Step 2: Recovery Charge
- Step 3: Soft Start
- Step 4-6: Bulk
- Step 7: Charge
- Step 8: Maintenance 1 (Trickle) & Maintenance 2

## 10 STAGE CHARGER



- Step 1: Check
- Step 2: Recovery Charge
- Step 3: Soft Start
- Step 4-7: Bulk
- Step 8: Charge
- Step 9 & 10: Maintenance 1 (Trickle) & Maintenance 2



**IBC26000B**



**IBC15000B**



**IBC7500B**

	IBC26000B	IBC15000B	IBC7500B
Art.no.	18181	18180	18173
Charging Voltage	12V / 24V	12V / 24V	12V / 24V
Charging Current	12V - 26A DC 24V - 13A DC	12V / 15A DC 24V / 7.5A DC	12V / 7.5A DC 24V / 3.74A DC
Battery Recovery Function	✓	✓	✓
Usage	12V & 24V Batteries, e.g. Wet, Gel, AGM (including Calcium-) and 12.8V 4-cells LiFePO4.  12V / 50 - 500 Ah 24V / 25 - 250 Ah 12.8V / 25 - 250 Ah	12V & 24V Batteries, e.g. Wet, Gel, AGM (including Calcium-) and 12.8V 4-cells LiFePO4  12V / 50 - 400 Ah 24V / 25 - 200 Ah 12.8V / 30 - 200 Ah	12V & 24V Batteries, e.g. Wet, Gel, AGM (including Calcium-) and 12.8V 4-cells LiFePO4  12V / 18 - 240 Ah 24V / 10 - 120 Ah 12.8V / 10 - 80 Ah
Charge Cycle	10 stage	10 stage	10 stage
Bluetooth Check & Charge app (Apple & Android)	✓	✓	✓
Autostart	✓	✓	✓
Compatible with Battery Tester IBT1	-	-	✓
Compatible with The Accessories IBC Ext. , IBC Rings and IBC Clips	-	-	✓
Car Data Supply Use Battery Charger as Power Source	✓	✓	✓
Eyelet Terminals	✓	✓	✓
Clamps	✓	✓	✓
Display	✓	✓	✓
Insulation	IP20	IP65	IP65
EAN	8717809181817	8717809181800	8717809181732



**IBC4000B**



**IBC800**



**IBC4000**

IBC4000B	IBC4000	IBC800
18172	18171	18179
6V / 12V	6V / 12V	6V / 12V
6V - 4A DC 12V - 4A DC	6V - 4A DC 12V - 4A DC	6V / 0.8A DC 12V / 0.8A DC
Battery recovery function	✓	✓
6V & 12VBatteries, e.g. Wet, Gel, AGM and 12.8V 4-cells LiFePO4  6V / 12 - 120 Ah 12V / 12 - 120 Ah 12.8V / 8 - 50 Ah	6V & 12V Batteries, e.g. Wet, Gel, AGM and 12.8V 4-cells LiFePO4  6V / 12 - 120 Ah 12V / 12 - 120 Ah 12.8V / 8 - 50 Ah	6V & 12V Batteries, Gel, Maintenance Free, AGM and 12.8V 4-cells LiFePO4  6V / 1.2 - 26 Ah 12V / 1.2 - 26 Ah 12.8V / 2 - 15 Ah
8 stage	8 stage	7 stage
✓	-	-
✓	✓	-
✓	✓	-
✓	✓	-
-	-	-
✓	✓	-
✓	✓	✓
✓	✓	-
IP65	IP65	IP65
8717809181725	8717809181718	8717809181794



# DRC Series

Pro-User Electronics also has wireless camera's available that are suitable for many applications. You can mount them on a truck, trailer, van, passenger car, caravan or camper. Pro-User Electronics only use digital system which reduce issues. A wireless reversing camera is very easy to and more cost effective to install compared to wire systems.

### Digital Wireless Camera Systems

- Ideal for car, truck, camper, caravan or trailer
- Weatherproof camera with 6 IR LEDs for improved night vision
- Automatic activation when reversing
- LCD display with distance indicator
- Extra long antenna for long distance signal transfer



DRC5040

Art.no.	
Connection Voltage	
Number of Cameras	
Digital Wireless Transmitter	
Dimensions Display Approx.	
Attachment Camera	
Expandable	
EAN	





DRC7040



DRC5040	DRC7040
20135	20243
12V / 24V	12V / 24V
1	1
2.4 Ghz	2.4 Ghz
5."	7."
Mounting plate	Screws
Second camera art.nr. 20139	Up to 4 cameras art.nr. 20244
8717809201348	8717809202437

## Rechargeable Air Compressor AC2400

Compact, lightweight yet strong! These are typical features of this compressor. Using this pump, your bicycle and car tyres and balls will be hard again in no time.

Ideal about this compressor is its built-in SOS LED light and theelithium battery. It can be used cordlessly and can be quickly recharged after use.



AC2400	
Art.no.	28102
DC - Input Voltage	7.4V
Lithium Battery Power	2200 mAh
Charger	USB-C
Max. bar / psi	10.3 bar / 150 psi
Weight	430 gr.
Dimensions	L12.5 x W8.1 x H3.8 cm
Housing Material	ABS
LED Emergency Lighting	✓
USB-C Charging Cable	1
Included	Ball pin, schrader-, presta valve & airhose
EAN	8717809281029

## Rechargeable Air Compressor BP120

This mini compressor is perfect if you do a lot of cycling. Its compact size makes it easy to take with you. The powerful and brush-free compressor ensures that bicycle tyres are hard again in no time.

Supplied complete with adapter, charging cable and air hose. Also suitable for balls.



BP120	
Art.no.	28100
DC - Input Voltage	5V / 1A DC
Charger	USB-C
Max. bar	8.2 bar
Weight	108 gr.
Dimensions	L71.5 x W45 x H32 cm
LED Emergency Lighting	✓
USB-C Charging Cable	1x
Included	Ball pin, schrader-, presta valve & airhose
EAN	8717809281005





## **PRO-USER ELECTRONICS IS PART OF TRADEKAR HOUSE OF LEISURE BRANDS. THESE ARE OUR OTHER BRANDS:**

### **Spinder**

Cycling with friends, on holiday or in the woods with the whole family; Spinder's bike carriers take your bikes everywhere and provide absolute freedom where safety comes first! Bike carriers suitable for 2, 3 or even 4 bikes; on the tow bar or on the roof. Of course with matching accessories. Solid quality products with a modern look.

**Visit the website for more information:**

**[www.spinder.com](http://www.spinder.com)**

### **Cover It**

We've got you covered! No more unnecessary scratches with the protective covers from Cover It. Various models of protective covers for dust- and scratch-free storage of a roofbox, roofbars, caravan awning and tent carpet. Cover It also offers a tailor-made bag set for the roof box. All bags and covers are made of strong, waterproof and UV-resistant double-layer PVC canvas.

**Visit the website for more information:**

**[www.cover-it-all.eu](http://www.cover-it-all.eu)**

### **Travelvision**

Travelvision, is the specialist in high-quality satellite-TV, Internet-TV and Wi-Fi products for motorhomes and caravans. Our product range includes satellite dishes, Smart TVs, mobile internet and IPTV solutions. As the market leader, we strive to offer reliable and user-friendly solutions that perfectly meet our customers' needs.

**Visit the website for more information:**

**[www.travel-vision.com](http://www.travel-vision.com)**

### **Pro-User bike carriers**

Pro-User bike carriers develops and manufactures solid and reliable bike carriers for the transportation of bicycles on the tow bar, back or roof of the car. All bike carriers are our own developments. We also have European patents on multiple (sub-) products. All our products are produced with great care and undergo multiple quality checks. Most of our products carry a European type approval granted by the RDW.

**Visit the website for more information:**

**[www.pro-user.eu](http://www.pro-user.eu)**

### **Enduro Technology**

In 2005, the idea formed at Enduro that everyone should have access to a manoeuvring system. A good product at an affordable price. And we succeeded! It led to the introduction of the first Enduro manoeuvring system in 2007. The complete line of batteries and bike carriers for both towbars and caravan drawbars has also become indispensable and is now widely available on European roads and far beyond!

**Visit the website for more information:**

**[www.enduro-europe.eu](http://www.enduro-europe.eu)**



